



Printed on paper 60% recycled, 40% FSC (Forest Stewardship Council)® certified, chlorine-free bleached



Since 1905

AVENUE LOUISE 225

B-1050 BRUXELLES

TEL: + 32 2 514 55 35

FAX: + 32 2 511 02 76

INFO@FIEC.EU

WWW.FIEC.EU

Photographic credits:  
Cover Pal Csecsei (HU/EVOSZ) - Tommi Ahlberg  
(FIN/RT) - DK/Dansk Byggeri - CZ/SPS -  
José Irún. © Eiffage (FR/FNTP) - BG/BCC.  
Above FFB (FR).

Design : Acapella, Brussels  
Printing : Arte Print, Brussels  
2009 © FIEC, all rights reserved



- AT *Bundesinnung Bau BI Bau  
Fachverband der Bauindustrie FVBI*
  - BE *Confédération Construction - Confederatie Bouw*
  - BG *Bulgarian Construction Chamber BCC*
  - CH *Schweizerischer Baumeisterverband - Société Suisse  
des Entrepreneurs SBV - SSE*
  - CY *Federation of the Building Contractors Associations  
of Cyprus - OSEOK*
  - CZ *Svaz podnikatelů ve stavebnictví v České republice SPS*
  - DE *Hauptverband der Deutschen Bauindustrie e.V. HDB  
Zentralverband des Deutschen Baugewerbes ZDB*
  - DK *Dansk Byggeri*
  - EE *Estonian Association of Construction  
Entrepreneurs EACE*
  - ES *Asociación de empresas constructoras de Ámbito  
Nacional SEOPAN  
Agrupación Nacional de Constructores de Obras ANCOP*
  - FI *Confederation of Finnish Construction Industries RT*
  - FR *Fédération Française du Bâtiment FFB  
Fédération Nationale des Travaux Publics FNTP*
  - GB *Construction Confederation*
  - GR *Association Panhellénique des Ingénieurs Diplômés  
Entrepreneurs de Travaux Publics PEDMEDE*
  - HR *Croatian Employers' Association - Construction  
Employers' Association HUP-UPG*
  - HU *National Federation of Hungarian Contractors EVOSZ*
  - IE *The Construction Industry Federation CIF*
  - IT *Associazione Imprese Generali AGI  
Associazione Nazionale Costruttori Edili ANCE*
  - LT *Lithuanian Builders Association LSA*
  - LU *Groupement des Entrepreneurs du Bâtiment  
et des Travaux Publics GEBTP*
  - NL *Bouwend Nederland*
  - NO *Entreprenørforeningen - Bygg og Anlegg EBA*
  - PT *Portuguese Federation of construction and public  
works' industry FEPICOP*
  - RO *The Romanian Association of Building Contractors  
ARACO*
  - SE *Sveriges Byggingstämmer BI*
  - SI *Construction and Building Materials Association CBMA*
  - SK *Zväz stavebných podnikateľov Slovenska ZSPS*
  - TR *Turkish Contractors Association TCA*
- Associate member:  
*European Federation of Foundation Contractors EFFC*
- Cooperation with:  
*European International Contractors EIC*

33  
federations

28  
countries

3  
million  
enterprises

MEMBER FEDERATIONS



Social Partner in the European Sectoral Social Dialogue of the Construction Industry together with FETBB-EFBWW-EFBH (European Federation of Building and Woodworkers) [http://ec.europa.eu/employment\\_social/social\\_dialogue/](http://ec.europa.eu/employment_social/social_dialogue/)



The European founding member of CICA (Confederation of International Contractors' Associations) [www.cica.net](http://www.cica.net)



Associate member of CEN (European Committee for Standardisation) [www.cen.eu](http://www.cen.eu)



Member of ECCREDI (European Council for Construction Research, Development and Innovation) [www.eccredi.org](http://www.eccredi.org)



Associate Member of the "Enterprise Europe Network" of the European Commission [www.enterprise-europe-network.ec.europa.eu](http://www.enterprise-europe-network.ec.europa.eu)



Cooperation with EIC (European International Contractors) for activities beyond Europe's borders [www.eicontractors.de](http://www.eicontractors.de)



Participant in the ECF (European Construction Forum) [www.ecf.be](http://www.ecf.be)



Member of ESF (European Services Forum) [www.esf.be](http://www.esf.be)



Member of "EPBD ("European Energy Performance of Buildings Directive") Buildings Platform" [www.buildingsplatform.eu](http://www.buildingsplatform.eu)



Partner in ChemXchange project - Creation of web-based database for SME users of chemicals in the construction sector



Partner in the OSHA (European Agency for Health and Safety at Work) Campaign on "Risk Assessment" <http://osha.europa.eu/en/campaigns/hs2008>



Partner of PV SUNRISE Project - Dissemination of Photovoltaic technologies across the construction industry [www.pvsunrise.eu](http://www.pvsunrise.eu)

KEY FIGURES | ACTIVITY 2008

CONSTRUCTION  
IN EUROPE

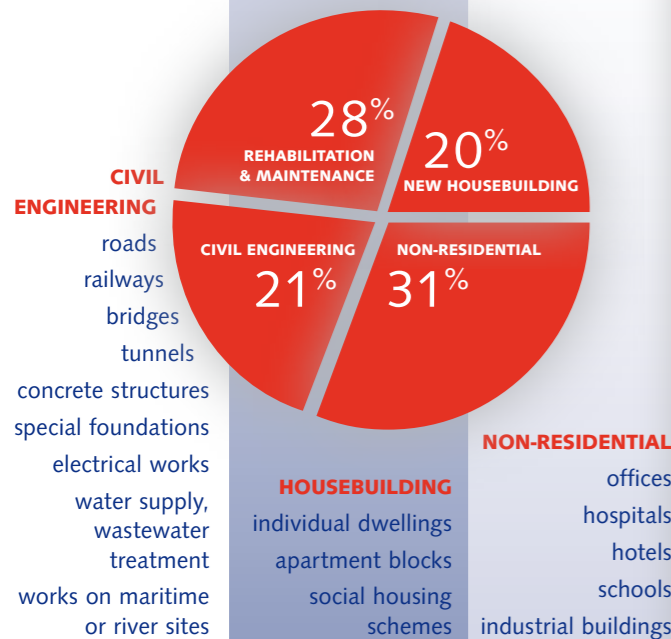


European  
Construction  
Industry  
Federation



28  
countries

33  
federations



**TOTAL CONSTRUCTION** bln. €

Germany	251
Spain	193
France	172
Great Britain	155
Italy	153
Netherlands	61
Belgium	35
Austria	33
Denmark	32
Ireland	30
Finland	30
Sweden	27
Poland	22
Czech Republic	20
Portugal	20
Greece	15
Romania	14
Hungary	9
Bulgaria	8
Slovakia	6
Luxembourg	4
Slovenia	4
Lithuania	3
Cyprus	3
Latvia	3
Estonia	2
Malta	0.4
<b>Total EU</b>	<b>1,305</b>
Norway	31
Switzerland	33
Turkey	41
USA	730
Japan	531

EU 27:  
**10.4%**  
of GDP

EU 27:  
**49.2%**  
of Gross Fixed  
Capital Formation

**PRODUCTION 2008**

**JOBS** x 1000

Germany	2,200
Spain	2,392
France	1,949
Great Britain	2,252
Italy	1,970
Netherlands	474
Belgium	257
Austria	263
Denmark	180
Ireland	257
Finland	191
Sweden	300
Poland	590
Czech Republic	440
Portugal	560
Greece	308
Romania	420
Hungary	302
Bulgaria	287
Slovakia	166
Luxembourg	31
Slovenia	87
Lithuania	169
Cyprus	44
Latvia	128
Estonia	81
Malta	12
<b>Total EU</b>	<b>16,310</b>
Norway	187
Switzerland	304
Turkey	1,241
USA	7,213
Japan	5,370

EU 27:  
**7.6%**  
of total  
employment

EU 27:  
**30%**  
of industrial  
employment

**TOTAL NUMBER OF ENTERPRISES** x 1000

Germany	335
Spain	501
France	326
Great Britain	209
Italy	590
Netherlands	97
Belgium	71
Austria	26
Denmark	33
Ireland	10
Finland	32
Sweden	77
Poland	160
Czech Republic	180
Portugal	61
Greece	115
Romania	25
Hungary	72
Bulgaria	14
Slovakia	3
Luxembourg	2
Slovenia	15
Lithuania	3
Cyprus	5
Latvia	3
Estonia	5
Malta	na
<b>Total EU</b>	<b>2,970</b>
Norway	37
Switzerland	36
Turkey	100

EU 27:  
**95%**  
with  
<20 workers

EU 27:  
**3**  
million  
enterprises



**MAIN ACTIVITIES 2008**

**INTERNATIONAL ACTIVITIES 2007**

**57** bln.€  
turnover

International  
Activity by  
destination zones  
in %

